

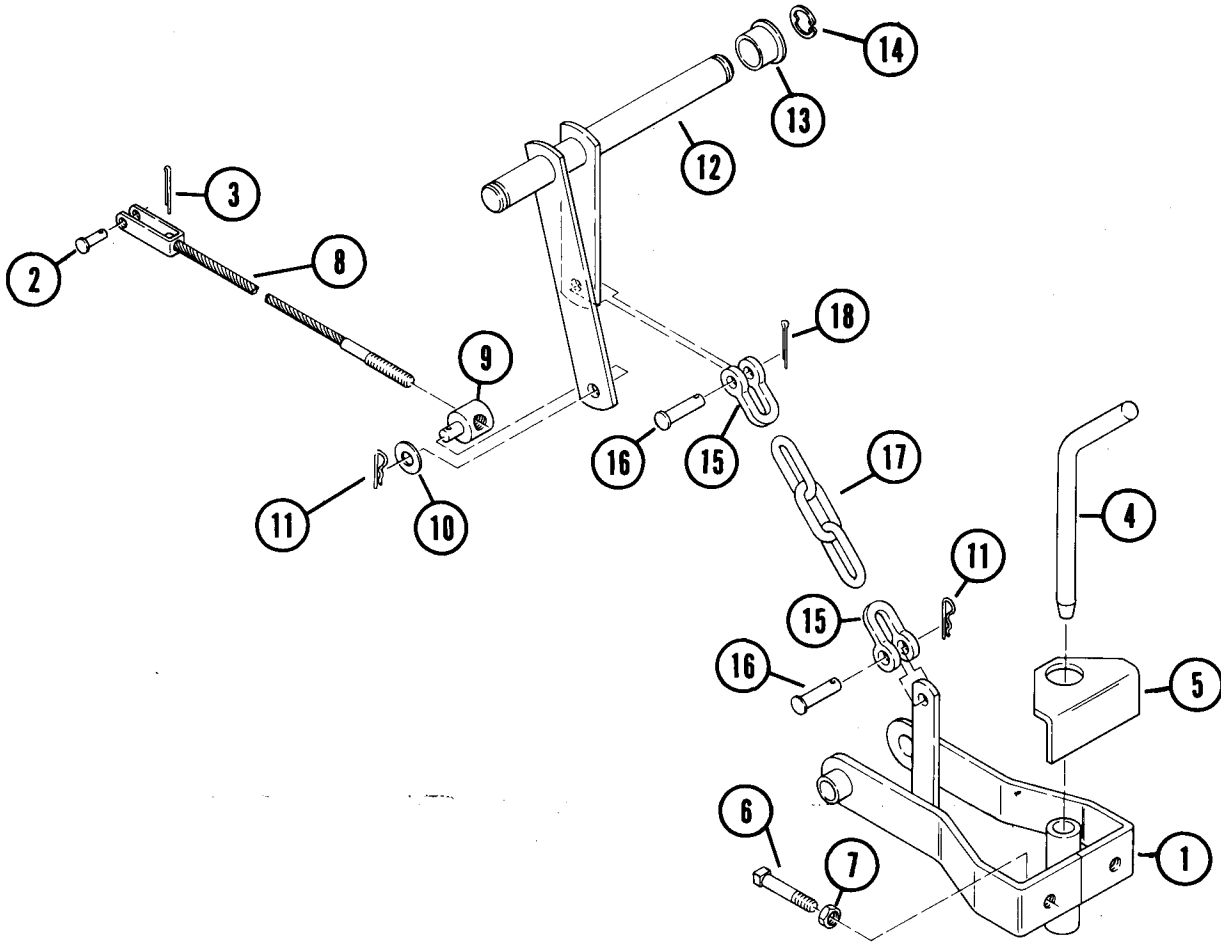
HEF

OPERATING INSTRUCTIONS

For tools requiring stabilization (elimination of side movement), turn stabilizer bolts clockwise against stabilizer plate after tool is connected to hitch. Lock

stabilizer bolts by tightening jam nuts. (NOTE: Stabilizer will have to be loosened before implement can be removed from hitch.)

DO NOT Stabilize Mold Board Plow.



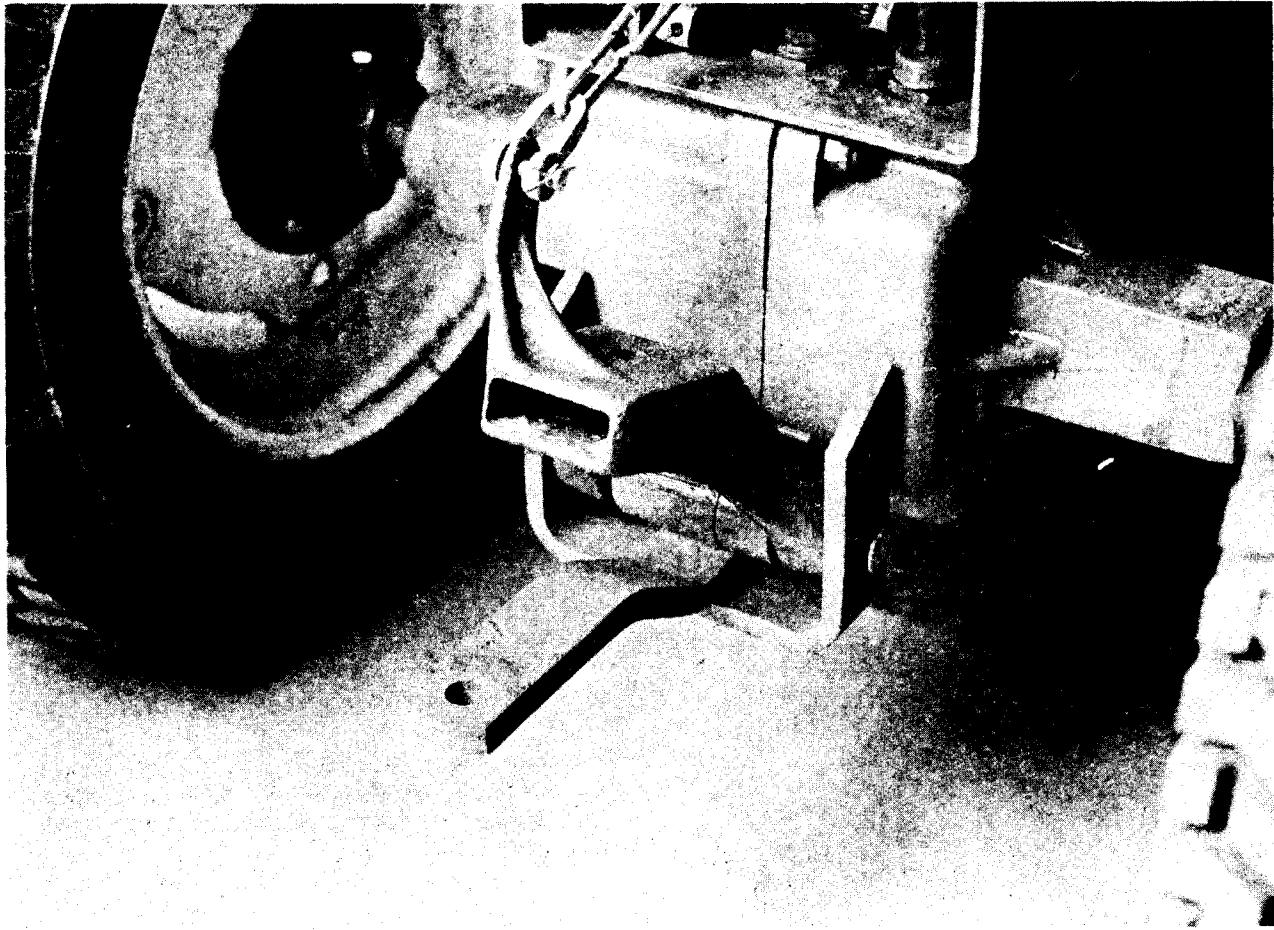
PARTS LIST — CLEVIS "TYPE A" HITCH FACTORY ORDER NUMBER 8-5512

Parts available only through Authorized Dealers.

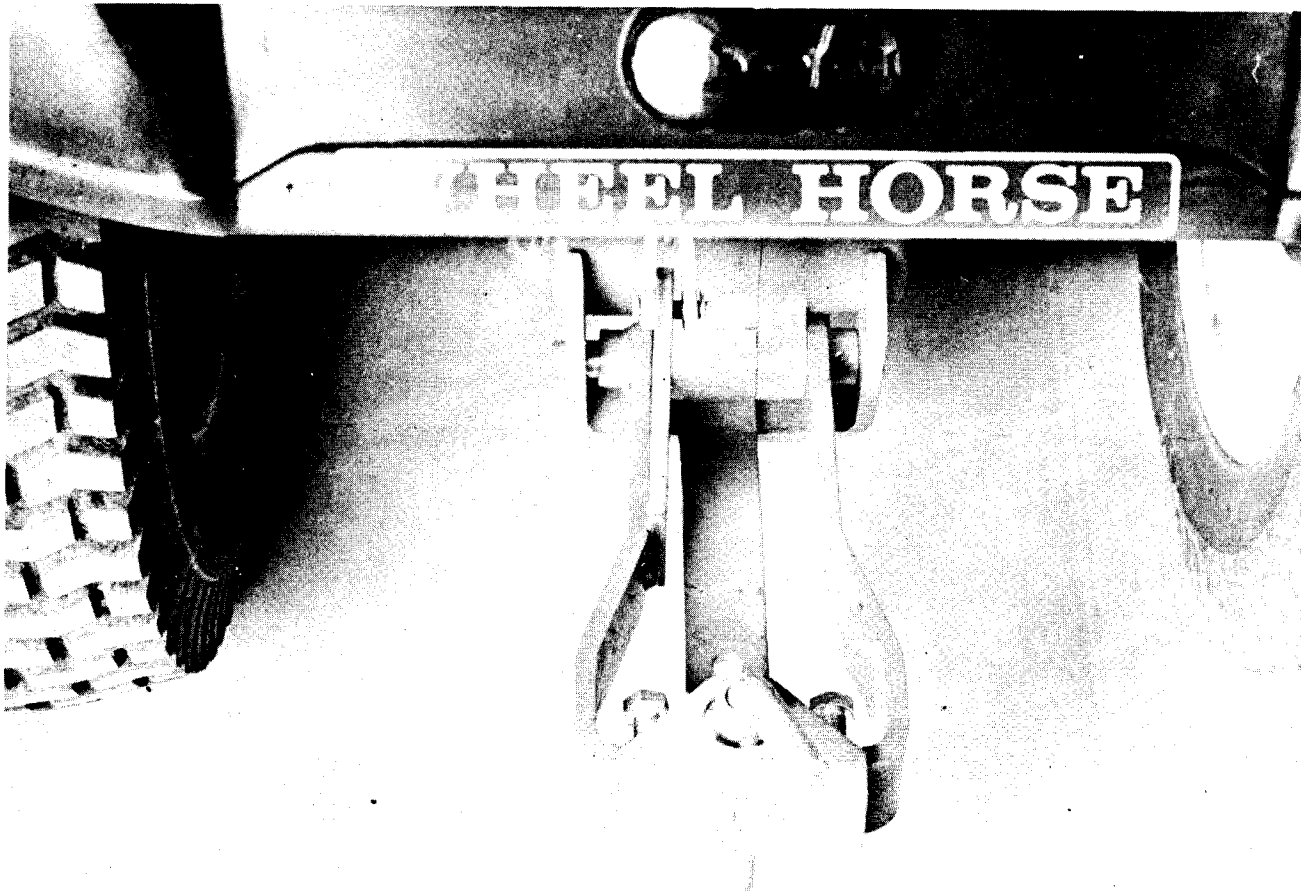
When ordering parts always list Part Number and Description.

(Specifications subject to change without notice.)

ITEM NO.	PART NO.	DESCRIPTION	NO. REQ'D.
1 X 1	105541	Hitch Assembly	1
2	932120	Pin	1
3	932000	Cotter Pin	1
1 X 4	8228	Hitch Pin	1
5	8089	Plate — Hitch Adjustment	1
2 X 6	909677	Sq. Hd. Set Screw 1/2-13 x 2	2
2 X 7	915238	Jam Nut 1/2-13	2
8	105542	Lift Cable Assembly	1
9	104524	Trunnion	1
10	920009	Washer, 3/8 SAE	1
1 X 11	933504	Hairpin Cotter	2
12	105539	Lever Assembly	1
13	6254	Bushing	2
14	5618	"E" Ring	2
1 X 15	105820	Clevis	2
1 X 16	105821	Clevis Pin	2
17	105544	Lift Chain	1
18	932017	Cotter Pin	1

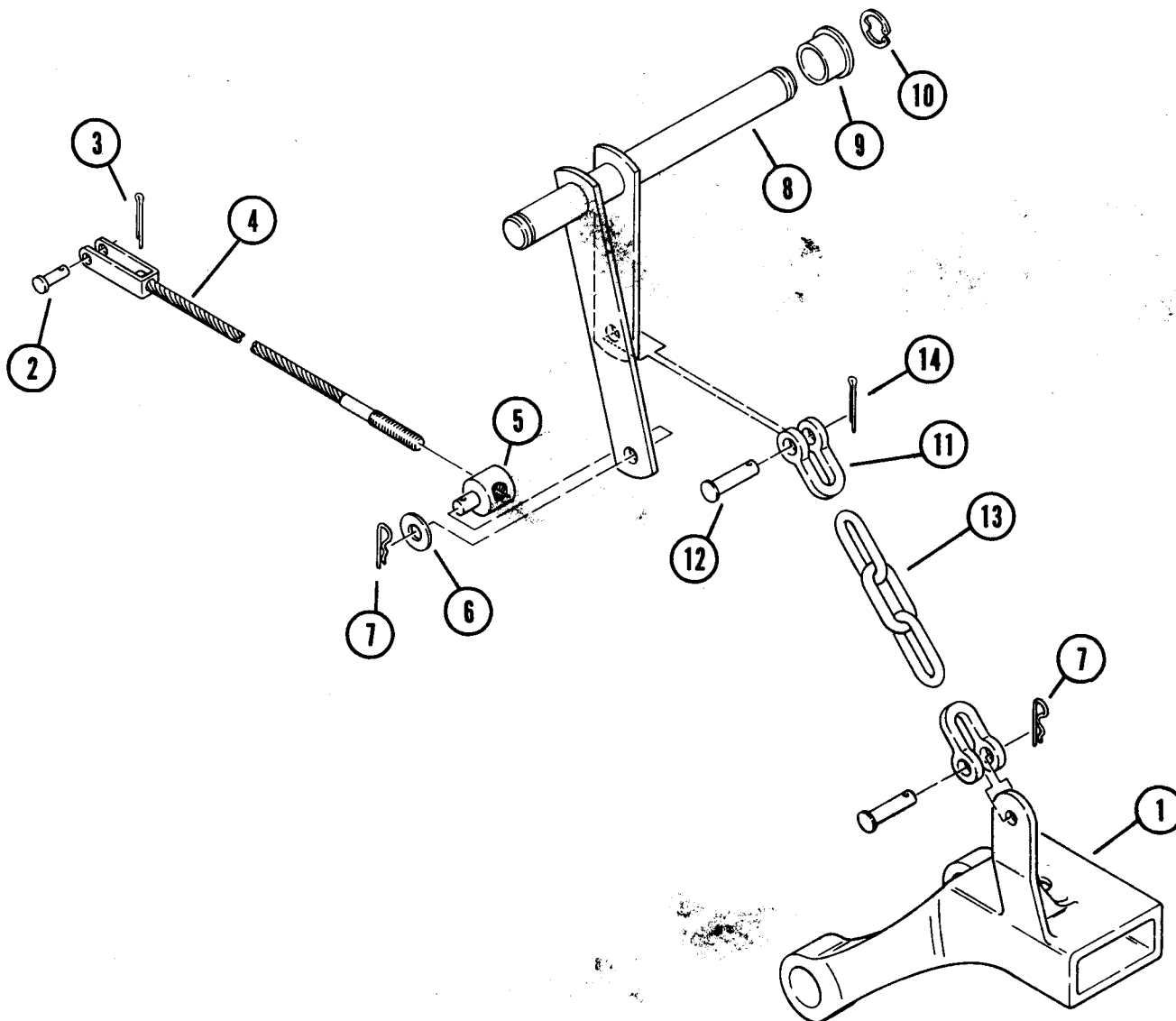


SLOT HITCH



HEF

EXPLODED VIEW 8-5522 SLOT HITCH



PARTS LIST — SLOT HITCH FACTORY ORDER NUMBER 8-5522

Parts available only through Authorized Dealers.
When ordering parts always list Part Number and Description.
(Specifications subject to change without notice.)

ITEM NO.	PART NO.	DESCRIPTION	NO. REQ'D.
1	3926	Hitch	1
2	932120	Pin	1
3	932000	Cotter Pin	1
4	105542	Lift Cable Assembly	1
5	104524	Trunnion	1
6	920009	Washer, 3/8 SAE	1
7	933504	Hairpin	2
8	105539	Lever Assembly	1
9	6254	Bushing	2
10	5618	"E" Ring	2
11	105820	Clevis	2
12	105821	Clevis Pin	2
13	105544	Lift Chain	1
14	932017	Cotter Pin	1